

THE POWER TO IMPRESS



AZDEN[®]
Handcrafted in Japan

Dual Powered **SGM-250** & Phantom Powered **SGM-250P**

PROFESSIONAL SHOTGUN MICROPHONES

Azden has set a new level in quality and performance with the SGM-250 and SGM-250P shotgun microphones. Both microphone models were designed for video and filmmaking professionals to deliver broadcast quality sound at an affordable price. A completely redesigned microphone element drastically improves sensitivity, frequency response and signal to noise ratio. The all metal-alloy case provides rugged durability and strong resistance to RF. The custom designed, slotted, acoustic barrel exhibits excellent super-cardioid directionality and side noise rejection.

The SGM-250 offers the flexibility of dual power operation with either phantom power or with a AA battery without compromising on sound quality. While the performance of other dual powered mics tends to suffer when using battery power, the SGM-250 maintains the same superb performance whether using phantom and battery power. An easily accessible power switch located on the body of the microphone allows for switching into phantom power mode without the removal of the battery, and a convenient LED battery indicator lets the user know when the battery level is running low.

Meanwhile, the SGM-250P is a phantom powered only version of the same microphone, with the same size acoustic barrel but shorter overall length, and a lower price point as an added bonus for those that don't require battery operation.

Both microphones come with a switchable low-cut filter to help reduce low frequency noise. When engaged, the filter is active at 160Hz with a roll-off of 3dB per octave for a smoother and more noticeable reduction in bass response.

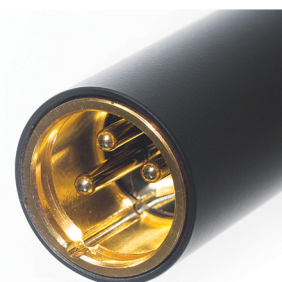
Measuring 250mm and 200mm in length respectively, the SGM-250 and SGM-250P are suitable for almost any filming situation. Long enough to capture great sound from a distance while mounted to a boom pole or on top of a camera, they're still unobtrusive enough to be used on compact DSLR cameras.

Both microphones come with a leatherette, zippered carrying pouch, shock-absorbing mic clip with shoe mount and a foam windscreen.

SGM-250



SGM-250P



Highlights

- Newly engineered, highly sensitive, original microphone element
- Wide frequency response for optimal performance in various situations
- All metal case designed for durability, superior directionality and off-axis rejection
- Operates on DC 48V phantom power
- Switchable low-cut filter
- Gold-plated XLR connector
- 10 year warranty

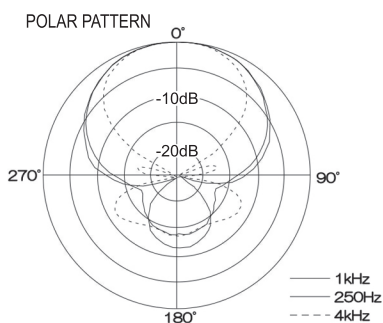
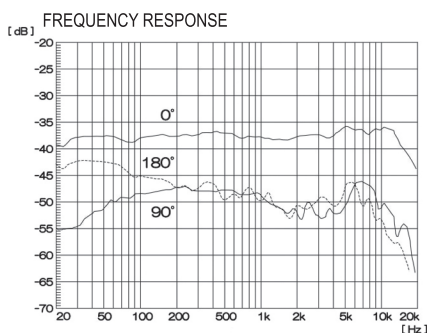
SGM-250 only

- LED battery indicator
- Dual power operation with AA battery or phantom power

Specifications

Freq. Resp.:	20Hz – 20kHz
Low-Cut Filter:	Selectable @160Hz, 3dB/Oct
Polar Pattern:	Super Cardioid
Sensitivity:	-38dB at 1kHz (0dB = 1V/Pa)
Dynamic Range:	115dB w/ P48 110dB w/ AA battery*
Impedance:	120Ω (at 1kHz)
Max Input SPL:	130dB w/ P48 (1kHz at 1% T.H.D.) 127dB w/ AA battery* (1kHz at 1% T.H.D.)
S/N Ratio:	77dB (1kHz at 1Pa)
Power Req.:	DC 11 - 50V Phantom or 1.5V AA battery*
Output:	Gold plated 3-pin XLR
Dimensions:	250mm / 200mm (L) x 21mm (D) 9.84" / 7.87" (L) x 0.83" (D)
Weight:	160g (5.65 oz) / 90g (3.17 oz)
Accessories:	Shock mount, windscreen, carrying case

*battery specs do not apply to the SGM-250P



SGM-250

PROFESSIONAL DUAL POWERED
SHOTGUN MICROPHONE

SGM-250P

PROFESSIONAL SHOTGUN
MICROPHONE



SGM-250 with accessories

